

Driver history and release notes for the R&S®OSP Open Switch and Control Platform Driver Documentation

Products:

- | R&S®OSP120
- | R&S®OSP130
- | R&S®OSP150

Driver History and Release Notes for LabWindows/CVI, LabVIEW and VXPlug&Play drivers for VEE, C++, C#, Visual Basic, Visual Basic.NET etc.

Table of Contents

1	Instrument driver history	3
1.1	History for LabWindows/CVI and VXIplug&play drivers for VEE, C++, C#, Visual Basic, Visual Basic.NET etc.....	3
1.2	History for LabVIEW	3
2	LabWindows/CVI.....	4
2.1	CVI Version.....	4
2.2	Additional Help.....	4
3	LabVIEW	5
3.1	Getting Started.....	5
3.2	LabVIEW settings.....	5
3.2.1	LabVIEW 8 and later	5
3.2.2	LabVIEW 7	6
3.3	Additional Help for LabVIEW drivers.....	6
3.4	LabVIEW 7.1 driver	6
3.5	LabVIEW 8.2 and 8.5 drivers.....	6
4	VXIplug&play Instrument Driver for VEE, C++, C#, Visual Basic, Visual Basic .NET etc.	7
4.1	C#	7
4.2	Visual Basic .NET	7
4.3	VEE Version.....	7
4.4	LabWindows/CVI.....	7
4.5	Additional Help.....	8
4.6	Additional Information	8

History for LabWindows/CVI and VXIplug&play drivers for VEE, C++, C#, Visual Basic, Visual Basic.NET etc.

1 Instrument driver history

1.1 History for LabWindows/CVI and VXIplug&play drivers for VEE, C++, C#, Visual Basic, Visual Basic.NET etc.

History for LabWindows/CVI and VXIplug&play drivers for VEE, C++, C#, Visual Basic, Visual Basic.NET etc		
Revision	Date	Note
1.0	07/2008	Initial release

1.2 History for LabVIEW

History for LabVIEW		
Revision	Date	Note
1.0	07/2008	Initial release

2 LabWindows/CVI

2.1 CVI Version

Use National Instruments LabWindows/CVI 6 or later.

2.2 Additional Help

The LabWindows/CVI instrument driver consists of a ZIP archive containing the driver sources. In addition, the instrument driver documentation is also included in compressed HTML format (Windows CHM help file) and stored together with the driver sources.

3 LabVIEW

3.1 Getting Started

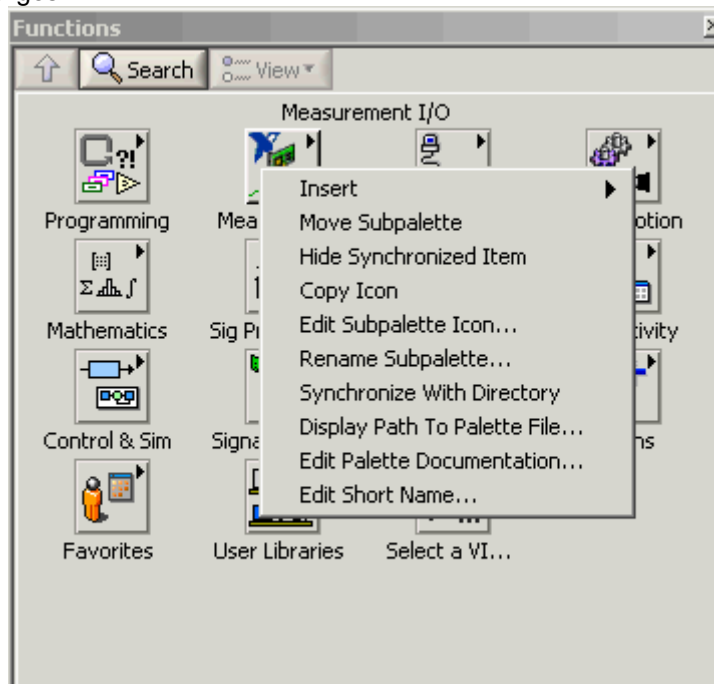
Unpack content of archive into LabVIEW Instr.lib folder (i.e. \Program Files\LabVIEW 8.0\instr.lib). The driver will then be directly accessible from LabVIEW Instrument Driver function palette menu.

3.2 LabVIEW settings

For best results please turn off 'Synchronize with directory' feature on Instrument Drivers palette before installing any Rohde & Schwarz LabVIEW driver. If this feature is turned on, it overwrites driver's palette files with its own.

3.2.1 LabVIEW 8 and later

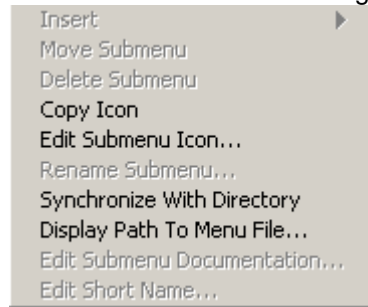
Turn off "Synchronize with directory" feature :
Tools => Advanced => Edit palette set. Then find "Instrument I/O" palette, right click on it and clear checkbox besides Synchronize with directory in context menu. Save the changes.



3.2.2 LabVIEW 7

Turn off "Synchronize with directory" feature :

Tools->Advanced->Edit palette views. Then find "Instrument I/O" palette => Instr Drivers right click on it and clear checkbox besides Synchronize with directory in context menu. Save the changes.



3.3 Additional Help for LabVIEW drivers

The LabVIEW instrument driver consists of a ZIP archive containing the driver sources (LLB and MNU files). In addition, the instrument driver documentation is included in compressed HTML format (Windows CHM help file) stored together with the LV driver sources.

Each VI's help is linked to the section in the "CHM" file that describes all the features of the VI.

3.4 LabVIEW 7.1 driver

Please use the LabVIEW 7 driver.

3.5 LabVIEW 8.2 and 8.5 drivers

Please use the LabVIEW 8 driver.

4 VXIplug&play Instrument Driver for VEE, C++, C#, Visual Basic, Visual Basic .NET etc.

4.1 C#

A wrapper is necessary to enable a direct access to the driver DLL.
The rsosp.cs wrapper for C# is automatically installed in the ~\VXIpnP\WinNt\include directory.

4.2 Visual Basic .NET

A wrapper is necessary to enable a direct access to the driver DLL.
The rsosp.vb wrapper for .NET is automatically installed in the ~\VXIpnP\WinNt\include directory.

4.3 VEE Version

Use VEE 6 or later.

4.4 LabWindows/CVI

The driver is supplied as both a source code file and as a dynamic link library file (dll).
There are several advantages to using the dll form of the driver. These include:

1. Transportability across different computer platforms

2. Faster load time for your project

LabWindows/CVI by default will attempt to load the source version of the instrument driver. To load the dll you must include the file rsosp.fp in your project. This file can be found in the vxipnp\winnt\rsospx directory. Do not include rsosp.c in your project. You must also provide an include path for rsosp.h. This is done by adding the directory ~vxipnp\winnt\include to the include paths (CVI Project Option menu) if you have not already done so. The ~ refers to the directory in the VXIPNP variable. By default this is set to C:\.

4.5 Additional Help

In addition, the instrument driver documentation is also included in compressed HTML format (Windows CHM help file) and stored together with the driver sources in the ~VXI\pnp\WinNT\rsosp directory.

4.6 Additional Information

For more information regarding the VXIPnP instrument drivers, please read the readme.txt file that comes with each driver.

About Rohde & Schwarz

Rohde & Schwarz is an independent group of companies specializing in electronics. It is a leading supplier of solutions in the fields of test and measurement, broadcasting, radiomonitoring and radiolocation, as well as secure communications. Established 75 years ago, Rohde & Schwarz has a global presence and a dedicated service network in over 70 countries. Company headquarters are in Munich, Germany.

For comprehensive information about Rohde and Schwarz, please visit [Rohde & Schwarz Homepage](#).

For queries regarding technical aspects of our products, please contact [Customer Support](#).

For international services, please contact [Service Partners](#).

For information on training and seminars, please visit [Training Center](#).

For latest instrument driver updates, please see [Rohde & Schwarz Drivers](#).

Certified Quality System
ISO 9001
DQS REG. NO 1954 QM

Certified Environmental System
ISO 14001
DQS REG. NO 1954 UM

Rohde & Schwarz GmbH & Co. KG

Mühlendorfstraße 15 | D - 81671 München
Phone + 49 89 4129 - 0 | Fax + 49 89 4129 - 13777

www.rohde-schwarz.com